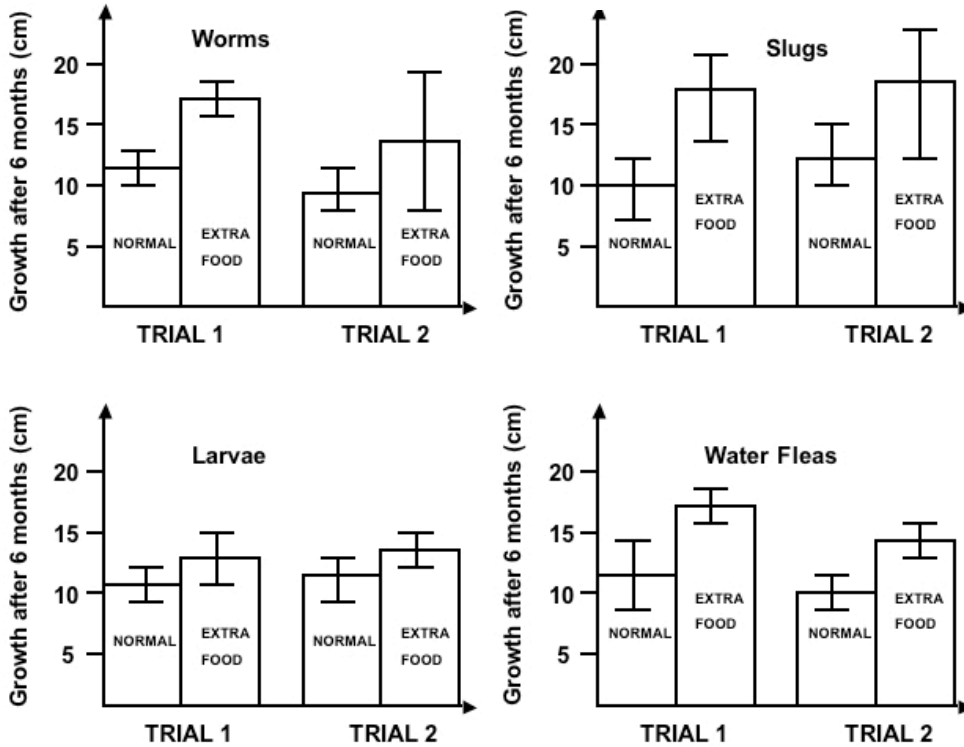


### Background Information for Questions 1 to 4: Salmon

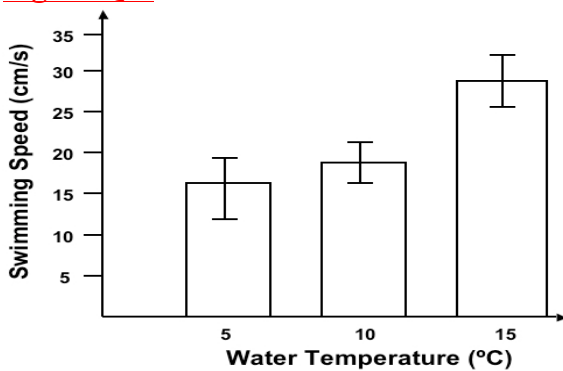
Salmon are an important fish species for a number of reasons. They can live in fresh and saltwater and often play major roles in food webs. They are also a major source of food for people across the globe. They grow relatively quickly but are not typically mature for 3-5 years after first hatching from eggs.

**Figure Q1:**

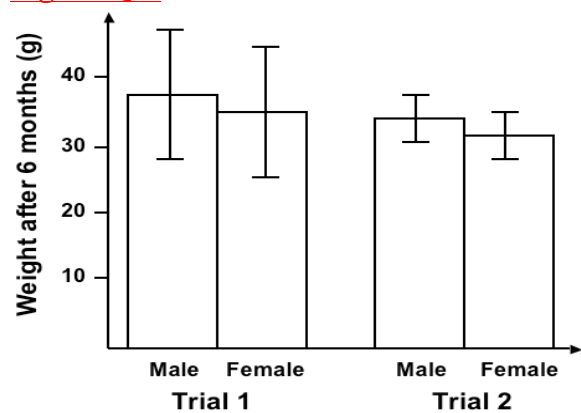


\*\*\* PLEASE NOTE there is no figure for Q2 \*\*\*

**Figure Q3:**



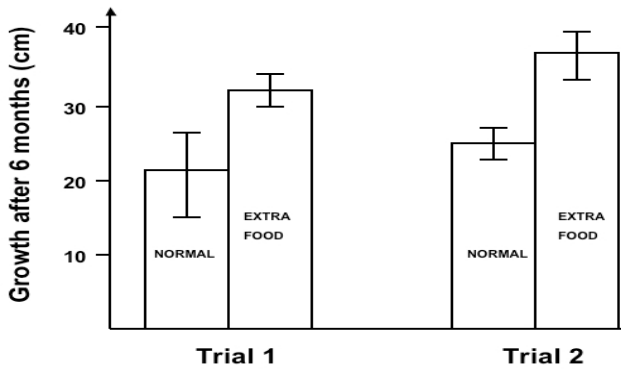
**Figure Q4:**



**Background Information for Questions 5 to 8: Squirrels and Raccoons**

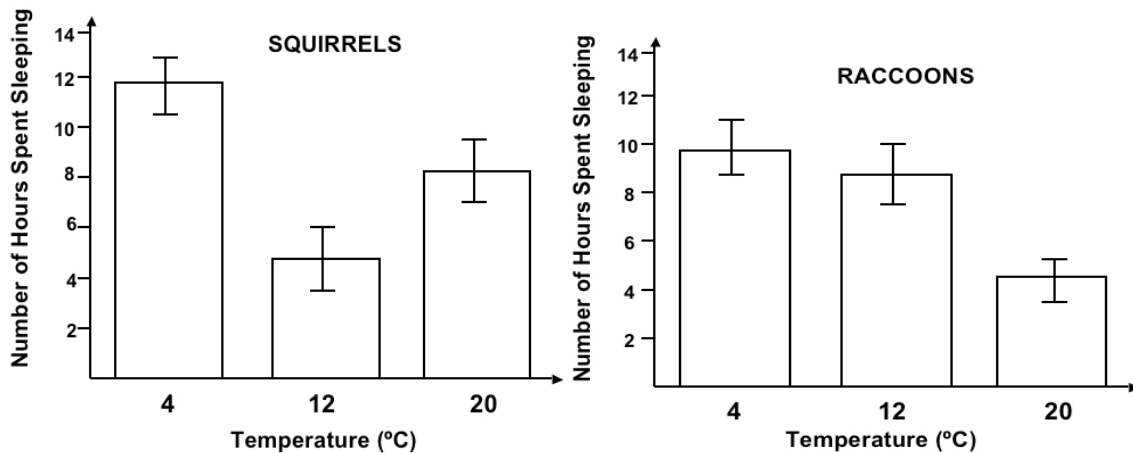
Squirrels and raccoons are common, medium-sized mammals native to North America. They grow fairly quickly and can be fully mature in less than 12 months after birth. Both species are opportunistic feeders, eating a variety of foods depending on their availability.

**Figure Q5:**



\*\*\* PLEASE NOTE there is no figure for Q6 \*\*\*

**Figure Q7:**



**Table Q8:**

Answer	Average variation around the mean (95% confidence intervals)	Range (From the shortest time spent sleeping to the longest)
A	INCREASE (+)	INCREASE (+)
B	INCREASE (+)	DECREASE (-)
C	DECREASE (-)	INCREASE (+)
D	DECREASE (-)	DECREASE (-)

## Background Information for Questions 9 to 12: Sunflowers

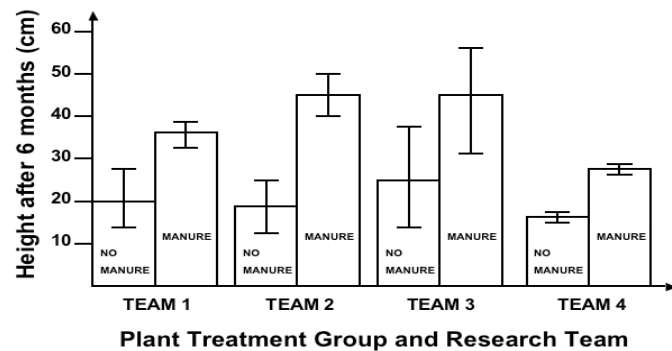
Sunflower plants grow rapidly from seeds to reach heights of 2-3 m in sunny climates. They are native to North and South America, but are common in other parts of the world where they were introduced as a food source for people.

**\*\*\* PLEASE NOTE there is no figure for Q9 \*\*\***

**Figure Q10:**



**Figure Q11:**



**Figure Q12:**

